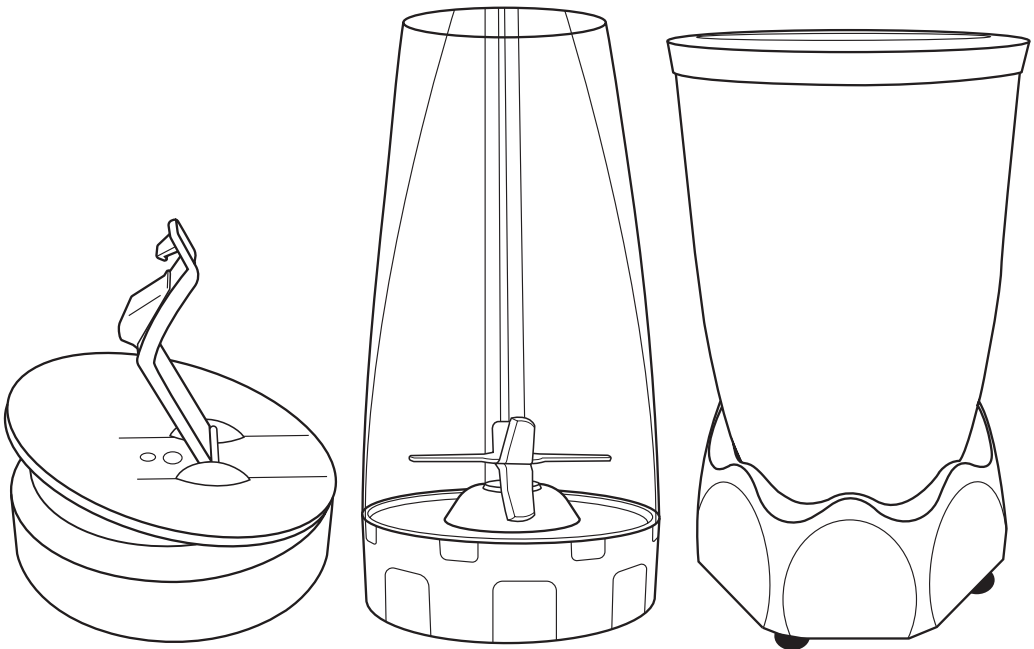

BlendEasi Nutri Blender Starter Kit

Information for use

Thank you for purchasing this BlendEasi Nutri Blender Starter Kit from DMD Collective.

This powerhouse blender boasts a 1000-watt motor and Pro Extractor Blades that pulverise ice, fruits and veggies. Whip up silky-smooth smoothies, creamy nut butters, and more. Plus, the included personal cup lets you take healthy drinks on the go. Enjoy effortless cleanup and get the most out of your ingredients with ultimate nutrient extraction.

Please read through all the information in this document and keep it for future reference.



Health and Safety Guidelines

- Always unplug the unit when not in use, before cleaning, or when adding or removing parts. Please read the instructions carefully before using any appliance.
- Always ensure that the voltage on the rating label corresponds to the mains voltage in your home.
- Incorrect operation and improper use can damage the appliance and cause injury to the user.
- The appliance is intended for household use only. Commercial use invalidates the warranty, and the supplier cannot be held responsible for injury or damage caused when using the appliance for any other purpose than that intended.
- Do not let children use this appliance unsupervised.
- Check the power cord and plug regularly for any damage. To prevent an electrical hazard, the manufacturer will need to replace the cord or plug if it is damaged.
- Do not use the appliance if it has been dropped or damaged in any way. If the unit is damaged, take it in for examination and/or repair by an authorized service agent.
- To reduce the risk of electric shock, do not immerse or expose the motor assembly, plug, or power cord to water or any other liquid.
- Never immerse the unit in water or any other liquid for cleaning purposes. Do not reach for an appliance that has fallen into the water. Unplug immediately.
- Remove the plug from the socket by gripping the plug. Do not pull on the cord to disconnect the appliance from the mains.
- Injury, fire, or electric shock could result from the use of accessory attachments that the manufacturer has not approved or supplied.
- A short cord is provided to reduce the hazards resulting from becoming entangled in or tripping over a longer cord.
- Do not let the cord hang over the edge of a table or counter.
- Ensure that the cord is not in a position where it can be pulled inadvertently.
- Do not allow the cord to touch hot surfaces, and do not place it on or near a hot gas or electric burner or in a heated oven. Do not place the unit on a hot surface.
- This appliance is not suitable for outdoor use. Do not use this appliance for anything other than its intended purpose.
- Do NOT carry the unit by the power cord.
- Do not leave this appliance unattended during use. An appliance should never be left unattended when plugged in.
- The manufacturer does not accept responsibility for any damage or injury caused by improper or incorrect use or for repairs carried out by unauthorised personnel.
- In the event of technical problems, switch off the appliance and do not attempt to repair it yourself. Return the appliance to an authorised service facility for examination, adjustment, or repair.
- Always insist on the use of original spare parts. Failure to comply with the above-mentioned precautions and instructions will affect the safe operation of this machine.
- Always use the appliance on a dry, level surface. Avoid using the appliance on sinks, drain boards, or uneven surfaces.

- Keep hands, hair, clothing, and utensils out of the jar while processing to reduce the risk of severe injury to people or damage to the appliance. Use a scraper only when the appliance is not in use.
- Caution: The blade assembly is sharp; handle with care. When handling the blade assembly, always hold it by the base of the blade assembly.
- Avoid contact with moving parts.
- Do not attempt to sharpen blades.
- Do not use the appliance if the blade assembly is bent or damaged.
- To reduce the risk of injury, never place the blade assembly on the base without the proper attachment.
- Do not operate this appliance on or near any hot surface (such as a gas or electric burner, or in a heated oven).
- The use of attachments or accessories not recommended or sold by the manufacturer may cause fire, electric shock, or personal injury.
- To reduce the risk of injury, never operate the appliance without the blade assembly in place; do not try to defeat the interlock mechanism; and make sure that the attachment is properly installed before operating the appliance.
- Do not expose jars to extreme temperature changes.
- Caution: Do not process hot foods or hot liquids.
- Do not overfill.
- Do not operate the appliance empty.
- If the appliance overheats, a thermal switch will activate and shut off the motor. To reset, unplug the appliance and let it cool down for approximately 30 minutes before using it again.
- You should not use appliance accessories in the microwave. Do not place the jar or the lid in the microwave, as it may result in damage to the accessories.
- Do not use another manufacturer's attachment or other parts.
- To avoid any danger, please assemble the product correctly.
- Before you assemble the motor unit, make sure the blade is securely fastened to the accessories before you assemble them onto the motor unit.
- Do not attempt to repair or disassemble the appliance. There are no user-serviceable components.
- Wait until the blender has cooled down sufficiently before cleaning it.
- Make sure that the motor base is unplugged from the power source before inserting or removing any attachment and before cleaning.
- **NOTE:** We have manufactured the product and its packaging from valuable recyclable materials. This reduces the amount of waste and helps preserve the environment. Dispose of the packaging in the proper manner. Make use of the local facilities provided for collecting paper, cardboard, and lightweight packaging by type.

We do not recommend using extension cords with this product.

Before First Use

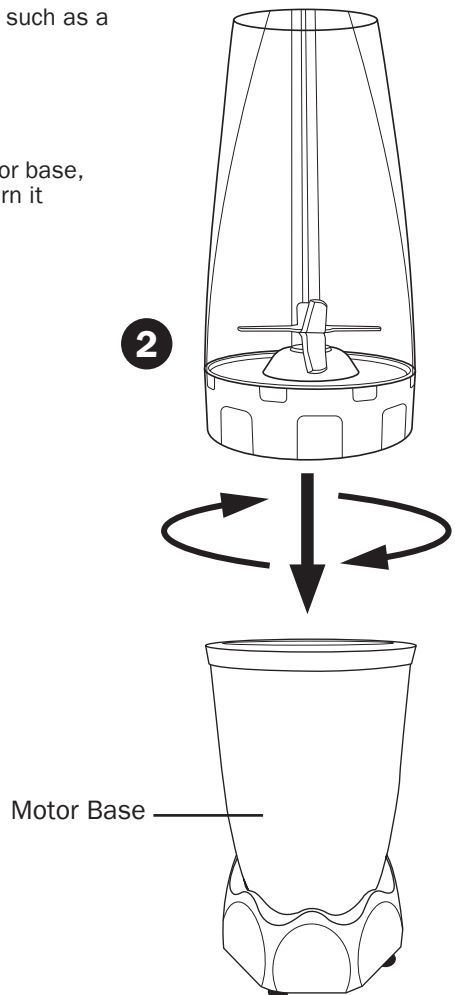
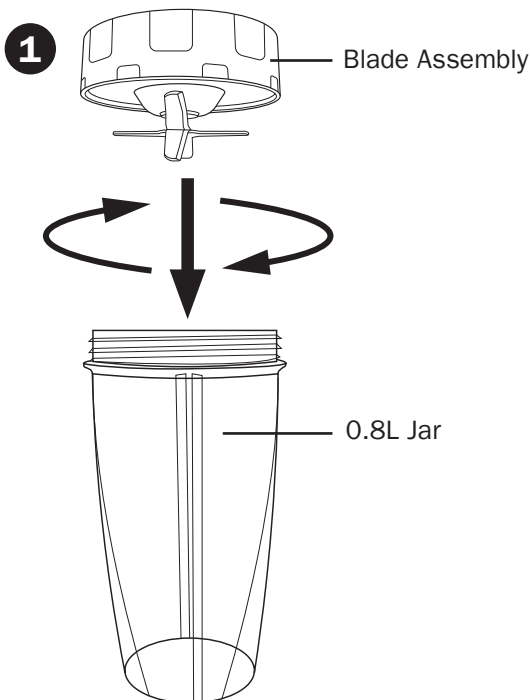
WARNING: The blades are very sharp. So be very careful when handling the blade unit. Be especially careful during cleaning.

1. Carefully unpack the appliance. Remove all packing materials and either discard or retain for future use.
2. Remove the plastic accessories and wash in warm soapy water. Jars, lids and attachments are all dishwasher safe. It is recommended that the lids and attachments be placed on the top rack. Ensure that the attachments are removed from the jars before placing in the dishwasher.
3. Rinse and dry thoroughly.
4. Wipe over the exterior of the motor base with a damp sponge or cloth.
5. Do not use abrasive cleaners.

Assembly

IMPORTANT: Make sure that the motor base is plugged in for use.

1. Place the motor base on a clean, dry, level surface such as a counter or table top.
2. Add ingredients to the jar.
3. Place the blade onto the jar and twist it on tightly until you have a good seal (Fig. 1).
4. Turn the jar upside down and place it onto the motor base, aligning the tabs on the jar with the motor base, turn it clockwise, the unit is ready for use (Fig. 2).



5. When you have reached your desired consistency, stop the appliance by turning the jar counterclockwise (Fig.3) and pull straight up to remove.

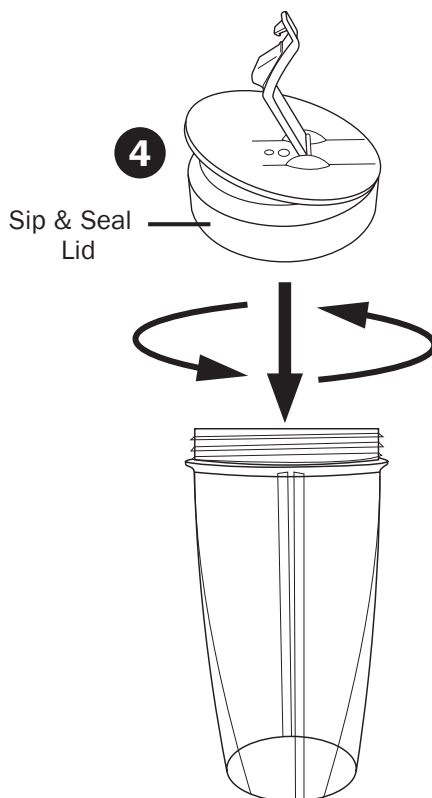
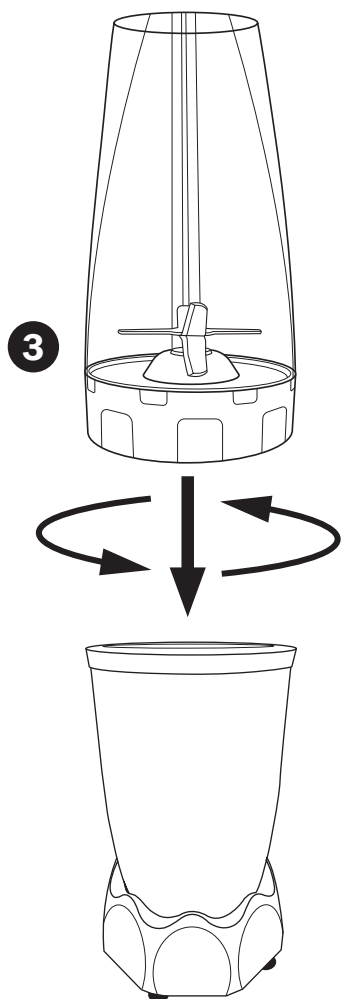
NOTE: Do not overfill! To avoid spilling, do not add ingredients past the “Max” fill line.

6. Turn the jar upright and remove the blade assembly by twisting counterclockwise. Be sure to store the blade assembly attached to an empty jar when not in use.
7. Place the Sip & Seal lid onto the jar (Fig. 4), twist to seal and enjoy!
8. Make sure that the motor base is unplugged when not in use.

Safety features

Built-in safety lock

The blender has a built-in safety lock feature, this ensures that you can only switch on the appliance while the cup and the blade subassembly are assembled on the motor base securely. If the appliance is correctly assembled, the built-in safety lock will be unlocked.



IMPORTANT: In the base of each blade's collar, there is a silicone gasket seal that creates an airtight fit with the jars. After dishwashing and before each use, always check to make sure the gasket is properly in place, as the heat from some dishwashers may cause the gasket to become loose.

WARNING: Do not operate the motor continuously for more than 60 seconds at a time. Allow the motor to rest for 180 seconds before continuing.

NOTICE: If the blade is not running smoothly, stop the product and add some liquid, or reduce the ingredients in the cup.

NOTE: To prevent product overheating, dry ingredients must not be processed for more than 30 seconds at a time.

Care & Maintenance

- Do not use scouring pads, abrasive cleaning agents or aggressive liquids such as petrol, alcohol or acetone to clean the appliance.
- All detachable accessories can be cleaned in dishwasher.
- You may also wash the jars by filling the jar to the Max fill line with warm water and drop of dish washing detergent, placing the blade assembly on the jar and pulsing a few times. Do not fill the jar more than Max fill line with water because it will overflow. Once clean, remove the jar from the motor base. Rinse the jar, attachment and lid under running water. Allow all the parts to dry before storing.
- Use a small brush (not included) to remove particles of food lodged underneath the blades.
- If some leftover particles dry onto the inside of the jar, fill the cup about 2/3 full with warm water and attach the blade subassembly. Place the jar and blade subassembly onto the motor base and operate the appliance for about 20-30 seconds to help loosen the stuck ingredients. Repeat the above step but use clean tap water. Empty blender and dry thoroughly.
- **CAUTION:** Do not try attempt to remove blades from the Blade subassembly for cleaning.

How to store

- Store the appliance upright. Do not place anything on top. Store the jars and the rest of the attachments alongside the appliance where they will not be damaged and won't cause a hazard.
- Remove and empty the jar and ensure that no food is jamming the cutting blades.
- Allow the appliance to cool for approximately 30 minutes.
- Re-install the jar onto the base and re-plug the appliance into the electric outlet.
- Proceed to use the appliance as before while making sure not to exceed the recommended maximum jar capacities.

Blending quantities & Preparation Times

Ingredients	Quantity	Time
Fruits & vegetables	50-200g	25 seconds
Baby food, soups & sauces	50-500ml	25 seconds
Batters	50-350ml	25 seconds
Shakes & mixed drinks	50-600ml	25 seconds
Black Peppercorns	100g tablespoon	10 seconds
Nutmeg	1 whole nutmeg	10 seconds
Whole Cinnamon Sticks	2, halved	45 seconds
Whole Cloves	80g	25 seconds
Anise or Fennel Seeds	1 tablespoon	30 seconds
Flax or Sesame Seeds	2 tablespoons	10 seconds
Nuts (to achieve chopped nuts)	200g	30 seconds
Chopped Nuts (to achieve flour)	200g	30 seconds
Coffee bean	200g	30 seconds

Troubleshooting Guide


Problem	Solution
Motor doesn't start or attachment doesn't rotate	For the jars, make sure that the tabs are seated in the slots and turned clockwise
Food is unevenly chopped	Reduce the amount of food you are blending
Food is too finely chopped or too watery	The food has been over processed. Blend for a shorter time
You can not make crushed ice from ice cubes	Use ice straight from the freezer. Blend for a shorter time. Ensure the jar is completely dry before adding the ice
Jar is leaking	Make sure that your lid or blade assembly is properly assembled to the jar. Leaking may occur if it is misaligned when twisted onto the jar. Turn the lid tightly clockwise.
Unit doesn't turn on	Make sure the unit is plugged in. Check the blade assembly is properly assembled to the jar and not misaligned
Unit doesn't turn off	Unplug the power cord from the electrical outlet and call customer service for support
Doesn't mix well	Blend in short intervals for even chopping & mixing. For frozen ingredients, blend in short intervals of 2-5 seconds and repeat.
Lid/blade assembly will not properly align to the jar	Set the jar on a level surface. Place the lid or blade assembly on top of the jar and align the threads so that the lid/blades sit flat on the jar. Twist clockwise so that the lid/blades evenly align to the jar until you have a tight seal.

Technical Support

If you require any technical support for your product within the warranty period, please contact us on **support@dmdcollective.co.uk** and provide the product name and supplier code (see Technical Specifications) along with the technical query and proof of purchase.

WEEE



The WEEE symbol  on this product means that this unit should be ethically dismantled or recycled to minimise environmental impact. Please check with your local authority for more information.

IMPORTANT: ADDITIONAL SAFETY INFORMATION

This device is **NOT** intended for use by persons (including children) with reduced physical, sensory or mental capabilities, or lack of experience and knowledge, unless they are supervised or have been given instruction concerning use of the device by a person responsible for their safety.

Technical Specifications

Product Name:

DMD BlendEasi Nutri Blender Starter Kit

Supplier Code:

DMD125

Voltage:

220V~240V

Frequency:

50/60Hz

Power:

1000W



Ace Supply Co (Europe) Ltd.,

Suite GA, Marsland House

Marsland Road, Sale M33 3AQ

For Product Support:

E: support@dmdcollective.co.uk

T: +44 (0)161 447 8597

EU Regd. Address: Ace Supply Co (Europe) Ltd.,
25 Herbert Place, Dublin 2, D02 A098
Republic of Ireland

www.dmdcollective.co.uk