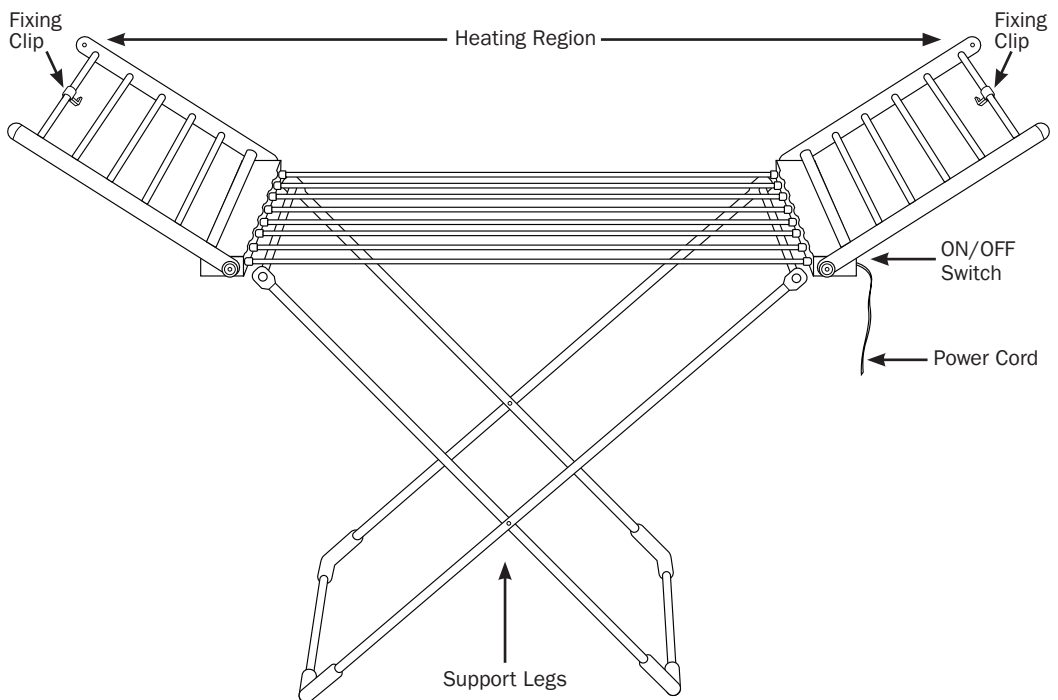


Winged Electric Clothes Dryer

Information for use



Thank you for purchasing this Winged Electric Clothes Dryer from DMD Collective. The dryer offers fast and simple laundry drying. The free-standing design has 20 tubes for quick and even heat distribution for your clothes, delivering outstanding drying results.

Before use, please read all instructions before using this product and keep these safety instructions for future reference.

Health & Safety Guidelines

- Always unplug the unit when not in use, before cleaning, or when adding or removing parts. Please read the instructions carefully before using any appliance.
- Always ensure that the voltage on the rating label corresponds to the mains voltage in your home.
- Incorrect operation and improper use can damage the appliance and cause injury to the user.
- The appliance is intended for household use only. Commercial use invalidates the warranty, and the supplier cannot be held responsible for injury or damage caused when using the appliance for any other purpose than that intended.
- Do not let children use this appliance unsupervised.
- Check the power cord and plug regularly for any damage. To prevent an electrical hazard, the manufacturer will need to replace the cord or plug if it is damaged.
- Do not use the appliance if it has been dropped or damaged in any way. If the unit is damaged, take it in for examination and/or repair by an authorized service agent.
- To reduce the risk of electric shock, do not immerse or expose the plug, or power cord to water or any other liquid.
- Never immerse the unit in water or any other liquid for cleaning purposes. Do not reach for an appliance that has fallen into the water. Unplug immediately.
- Remove the plug from the socket by gripping the plug. Do not pull on the cord to disconnect the appliance from the mains.
- Injury, fire, or electric shock could result from the use of accessory attachments that the manufacturer has not approved or supplied.
- A short cord is provided to reduce the hazards resulting from becoming entangled in or tripping over a longer cord.
- Do not let the cord hang over the edge of a table or counter.
- Ensure that the cord is not in a position where it can be pulled inadvertently.
- Do not allow the cord to touch hot surfaces, and do not place it on or near a hot gas or electric burner or in a heated oven. Do not place the unit on a hot surface.
- This appliance is not suitable for outdoor use. Do not use this appliance for anything other than its intended purpose.
- Do NOT carry the unit by the power cord.
- Do not leave this appliance unattended during use. An appliance should never be left unattended when plugged in.
- The manufacturer does not accept responsibility for any damage or injury caused by improper or incorrect use or for repairs carried out by unauthorised personnel.
- In the event of technical problems, switch off the appliance and do not attempt to repair it yourself. Return the appliance to an authorised service facility for examination, adjustment, or repair.
- Always insist on the use of original spare parts. Failure to comply with the above-mentioned precautions and instructions will affect the safe operation of this machine.
- Always fold the wings out before switching the ailer on.
- Always rinse or spin your clothes fully before placing on the dryer, so no water drips from your washing.
- Do not dry down jackets or quilts.
- The max load-bearing is 2.5KG per wing, load-bearing 10kg on the middle part.
- Be aware that after being switched on for 5 minutes, the temperature will remain constant at 45-55 Degrees Celsius without anything covering it.
- This appliance is intended only for drying textiles washed in water.

- This appliance is NOT intended for use by persons (including children) with reduced physical, sensory or mental capabilities, or lack of experience and knowledge, unless they are supervised or have been given instruction concerning use of the appliance by a person responsible for their safety.

How To Assemble

1. Lift up the main heating section and push the support leg to each side to secure the dryer in place (Fig 1).
2. Unclip the two wings on either side of the dryer and pull them out to use the whole dryer to hang clothes. (Fig 2).

How To Disassemble

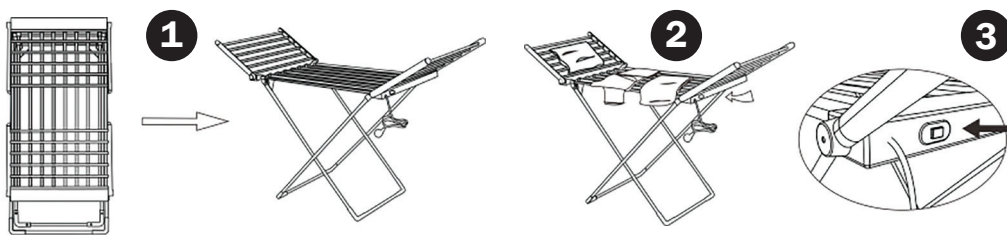
1. Make sure the dryer has cooled down before disassembling the product.
2. Turn the dryer's two wings inward and secure them both into the middle section of the dryer using the clips.
3. To dismount your dryer, place your foot on one of the supporting legs and slide the leg closest to you to the other side. Then it can be folded and stored away.

Power ON/OFF Switch

1. Press the switch at (I) position, the power indicator lights up and the product starts to heat. (Fig 3).
2. Press the switch at (O) position, the power indicator lights off and this product finishes heating.

How to use

1. Press the power switch to [OFF] position. (i.e. Power indicator light is off).
2. Plug the power cord into an electrical outlet.
3. After connecting to a suitable power supply, press the power ON/OFF switch, the power indicator lights up and then the warmer starts the heat.



Cleaning


- Before cleaning, please unplug the product and let it cool down.
- Do not put the product, power cord and plug into the water. Keep the cord dry.
- Never clean the product with alcohol or solvent-based cleansers.
- Please clean the surface with a wet towel first and then dry it with a soft cotton cloth.
- Never clean the product with alcohol or solvent-based cleansers.
- Do not use a metal ball or a rough cloth to wipe the product, it will scratch the surface of the product.

Technical Support

If you require any technical support for your product within the warranty period, please contact us on **support@dmdcollective.co.uk** and provide the product name and supplier code (see Technical Specifications) along with the technical query and proof of purchase.

WEEE



The WEEE symbol  on this product means that this unit should be ethically dismantled or recycled to minimise environmental impact. Please check with your local authority for more information.

IMPORTANT: ADDITIONAL SAFETY INFORMATION

This device is **NOT** intended for use by persons (including children) with reduced physical, sensory or mental capabilities, or lack of experience and knowledge, unless they are supervised or have been given instruction concerning the use of the device by a person responsible for their safety.

Technical Specifications

Product name	DMD Collective Winged Electric Clothes Dryer
Supplier code	DMD109SLR
Voltage	220-240V~50-60Hz
Power	230W
Size	1470 x 540 x 940mm
Folded Size	1130 x 540 x 54mm
Temperature Range	45–55 °C



The Ace Supply Co Ltd, Suite GA,
Marsland House, Marsland Road, Sale M33 3AQ

For Product Support:
E: support@dmdcollective.co.uk
T: +44 (0)161 543 6400

EU Registered. Address:
Ace Supply Co (Europe) Ltd. 25 Herbert Place,
Dublin 2, D02 A098, Republic of Ireland

www.dmdcollective.co.uk